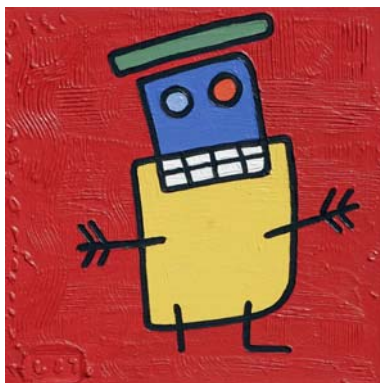


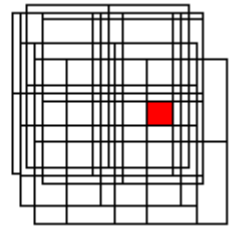
Justin Stationway – My Skool Exhibition – Worldart January 11 to 16, 2010. 6pm

Justin was born in Moorreesburg in 1987 and soon after his family moved to Atlantis. After completing school, he joined Richard in 2005.

Atlantis is an industrial town on the outskirts of Cape Town and, according to Justin, not an ideal place to grow up in.

It is an environment where the realities of unemployment and related social problems are hard to escape from and it is in this context that going to school was a very particular experience for Justin. On the one hand it provided hope and dreams of a better future while on the other, it hosted the result of a very anti-social environment. It is in this context that in Justin's paintings one will find the roughness of a playground bully contrasting to the colourfulness of promised opportunity

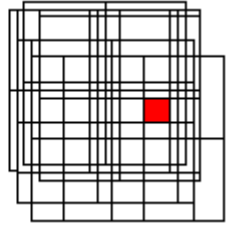




Justin Stationway – *My Skool Exhibition* – Worldart January 11 to 16, 2010. 6pm



Ek Gaan Skool Toe
100 x 100cm
2009
Impasto and acrylic on Canvas
R4500



Justin Stationway – *My Skool Exhibition* – Worldart January 11 to 16, 2010. 6pm



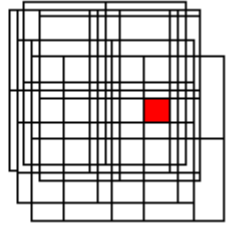
Sport Dag

100 x 100cm

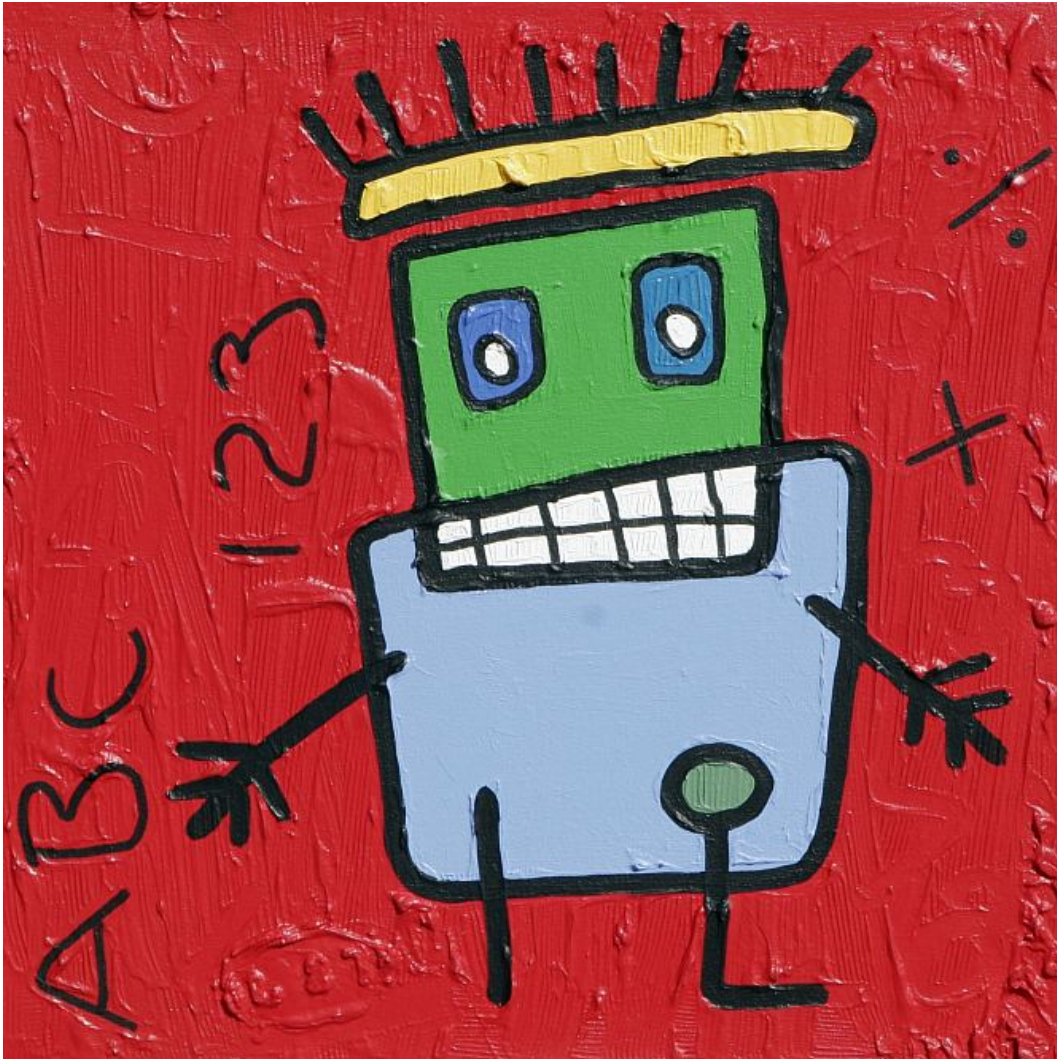
2009

Impasto and acrylic on Canvas

R4500



Justin Stationway – *My Skool Exhibition* – Worldart January 11 to 16, 2010. 6pm



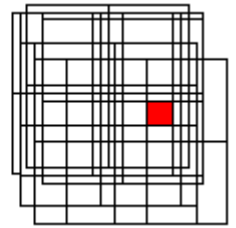
Die Skool Hoof

50 x 50cm

2009

Impasto and acrylic on Canvas

R3000



Justin Stationway – *My Skool Exhibition* – Worldart January 11 to 16, 2010. 6pm



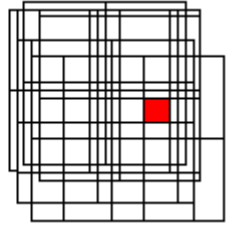
Die Sport Afrigter

50 x 50cm

2009

Impasto and acrylic on Canvas

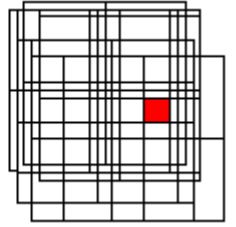
R3000



Justin Stationway – *My Skool Exhibition* – Worldart January 11 to 16, 2010. 6pm



My Beste Vriend se Klas
50 x 50cm
2009
Impasto and acrylic on Canvas
R3000



Justin Stationway – *My Skool Exhibition* – Worldart January 11 to 16, 2010. 6pm



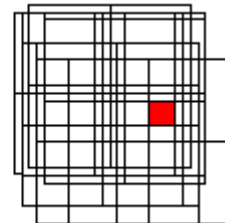
Die Afrigter

50 x 50cm

2009

Impasto and acrylic on Canvas

R3000



Justin Stationway – *My Skool Exhibition* – Worldart January 11 to 16, 2010. 6pm



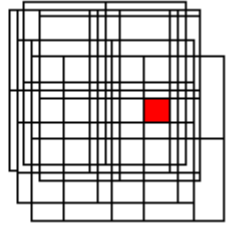
My Beste Vriend se Juffrou

50 x 50cm

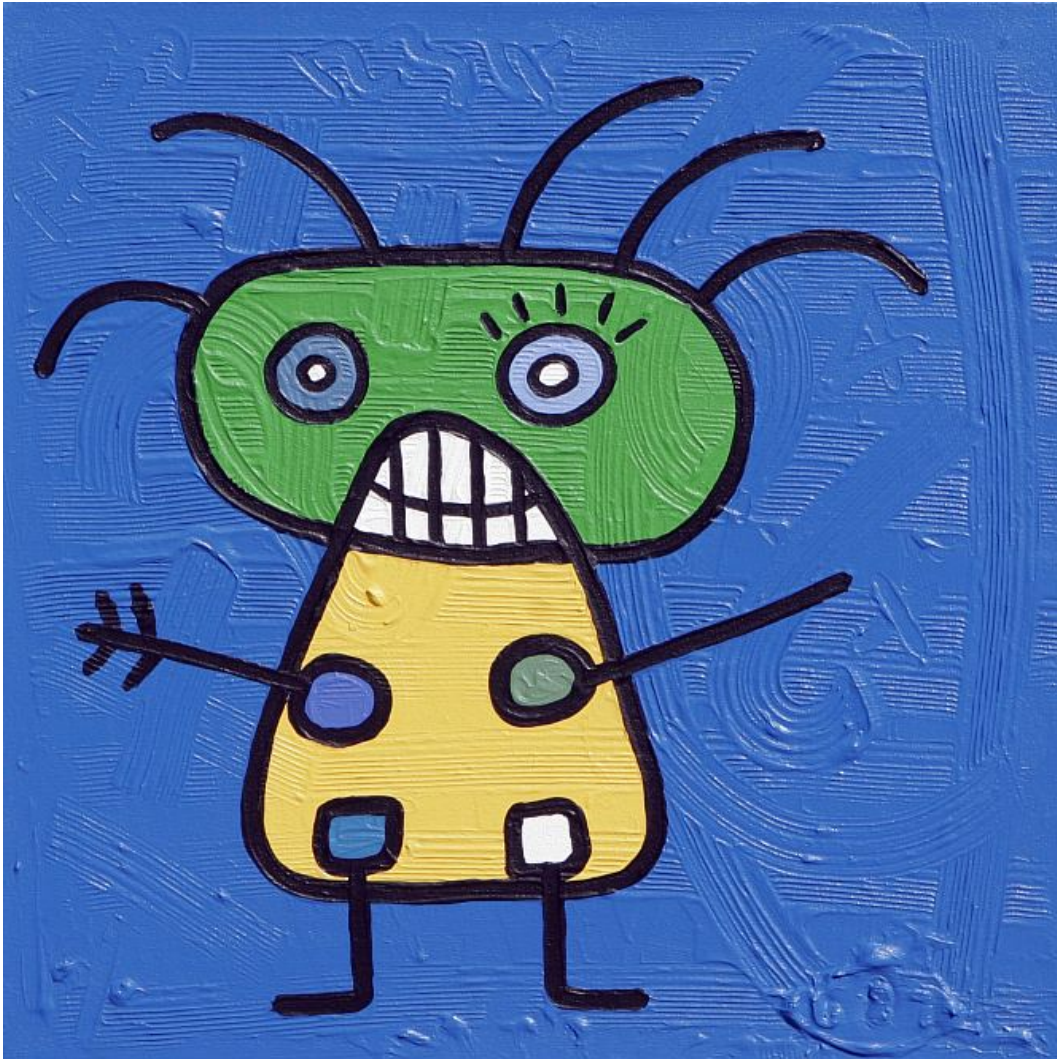
2009

Impasto and acrylic on Canvas

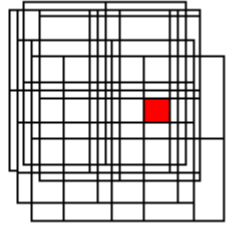
R3000



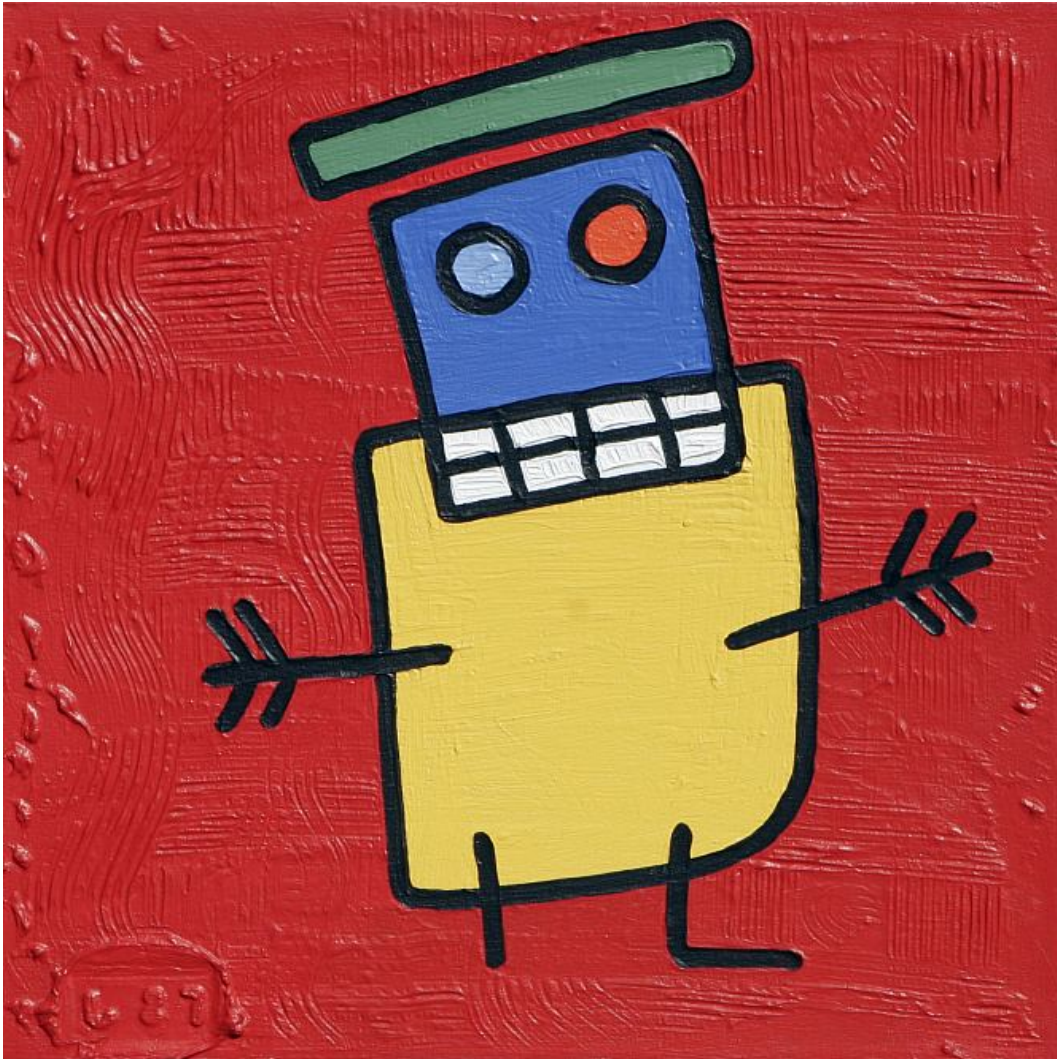
Justin Stationway – *My Skool Exhibition* – Worldart January 11 to 16, 2010. 6pm



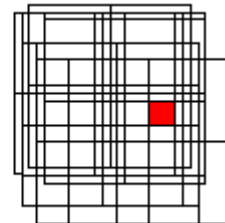
My Juffrou
50 x 50cm
2009
Impasto and acrylic on Canvas
R3000



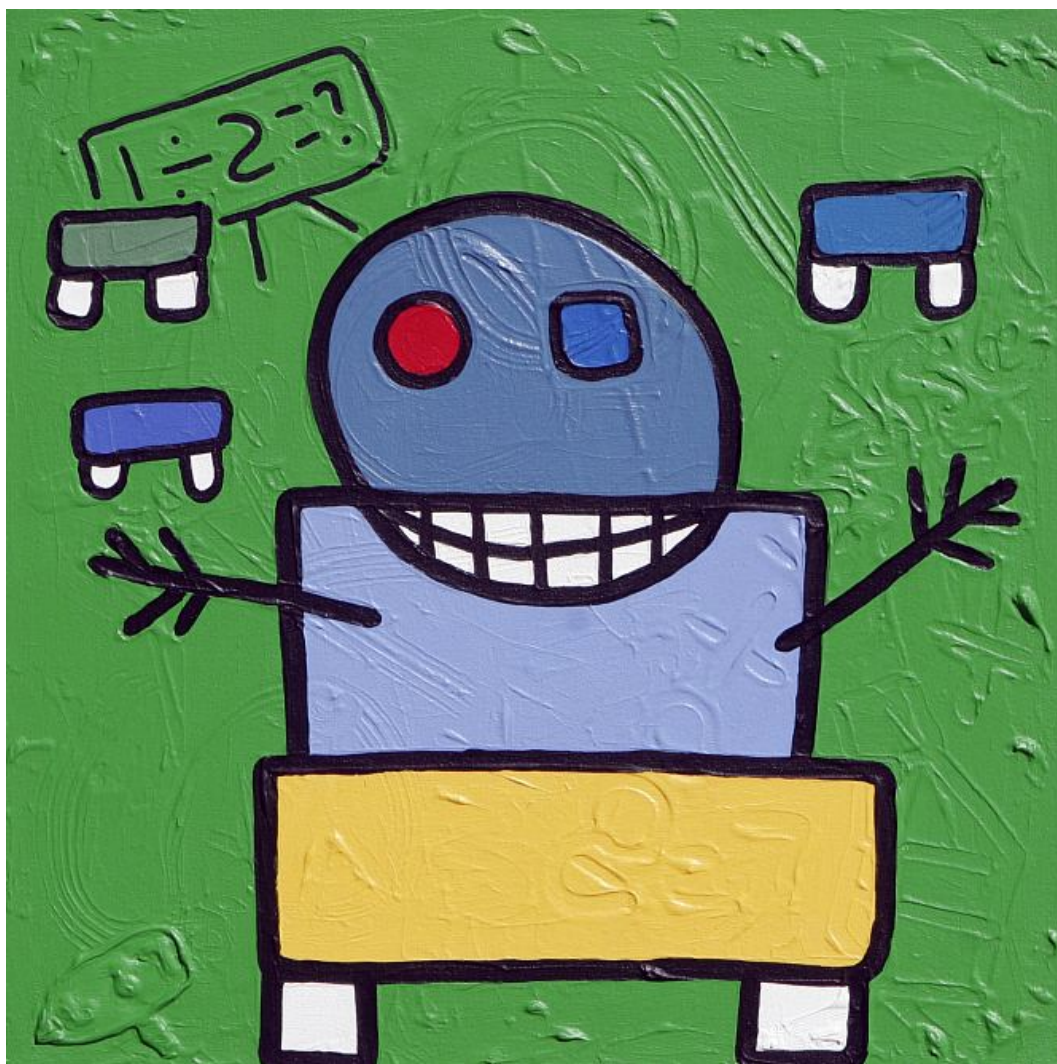
Justin Stationway – *My Skool Exhibition* – Worldart January 11 to 16, 2010. 6pm



My Beste Vriend
50 x 50cm
2009
Impasto and acrylic on Canvas
R3000



Justin Stationway – *My Skool Exhibition* – Worldart January 11 to 16, 2010. 6pm



My Klas
50 x 50cm
2009
Impasto and acrylic on Canvas
R3000